



Diocese of Sioux Falls

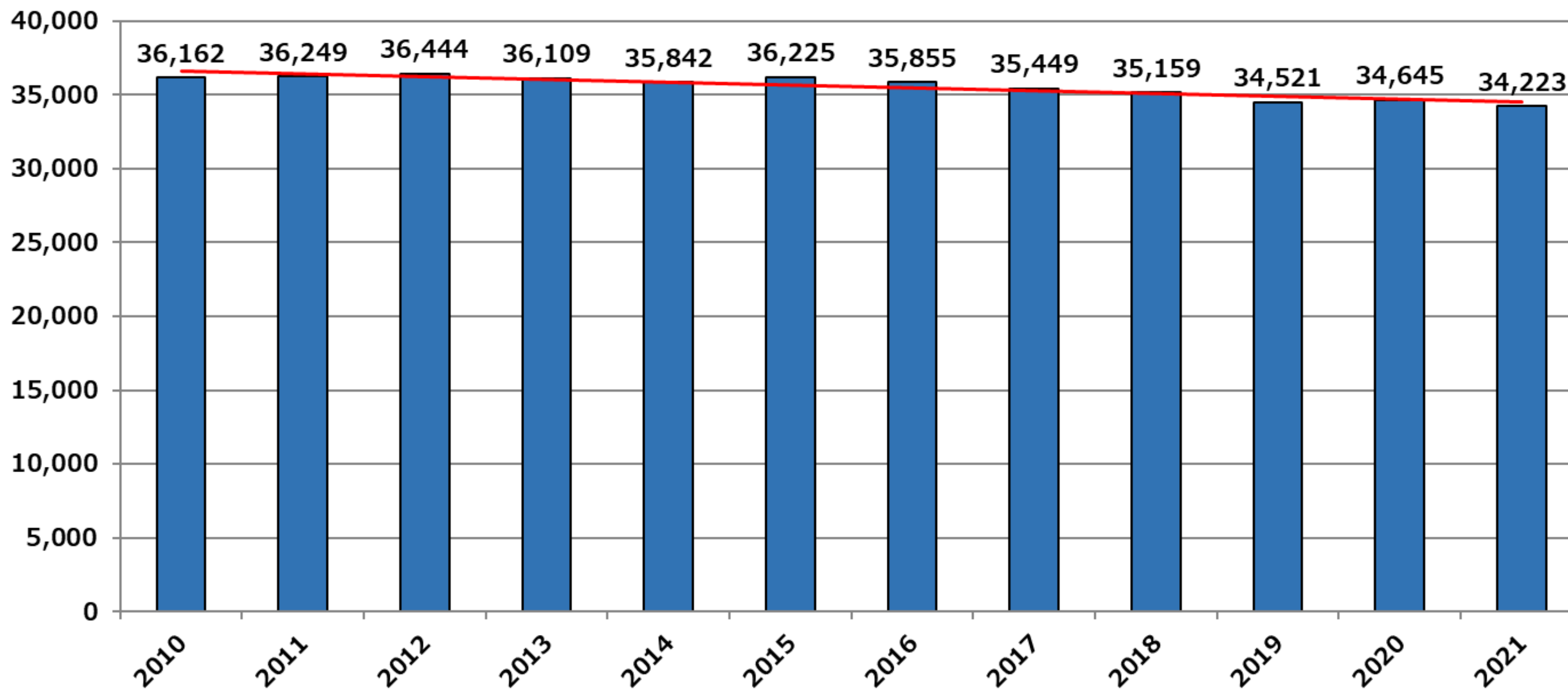
Who we are today? A portrait of our parishes: sacramental and financial data





Registered Catholic Households

Diocese of Sioux Falls
Historical Registered Catholic Households





Registered Catholic Households

- Between 2010 & 2021 total registered Catholic households declined 5.4% from 36,162 to 34,223
 - City of Sioux Falls – grew 3.5% from 9,066 to 9,385
 - Remaining diocese – declined 8.3% from 27,096 to 24,838
- Since 2010 the percentage of Catholics vs. overall population in the diocese declined from 15.9% to 13.4%
 - City of Sioux Falls – declined from 12.6% to 12.4%
 - Remaining diocese – declined from 18.2% to 14.6%



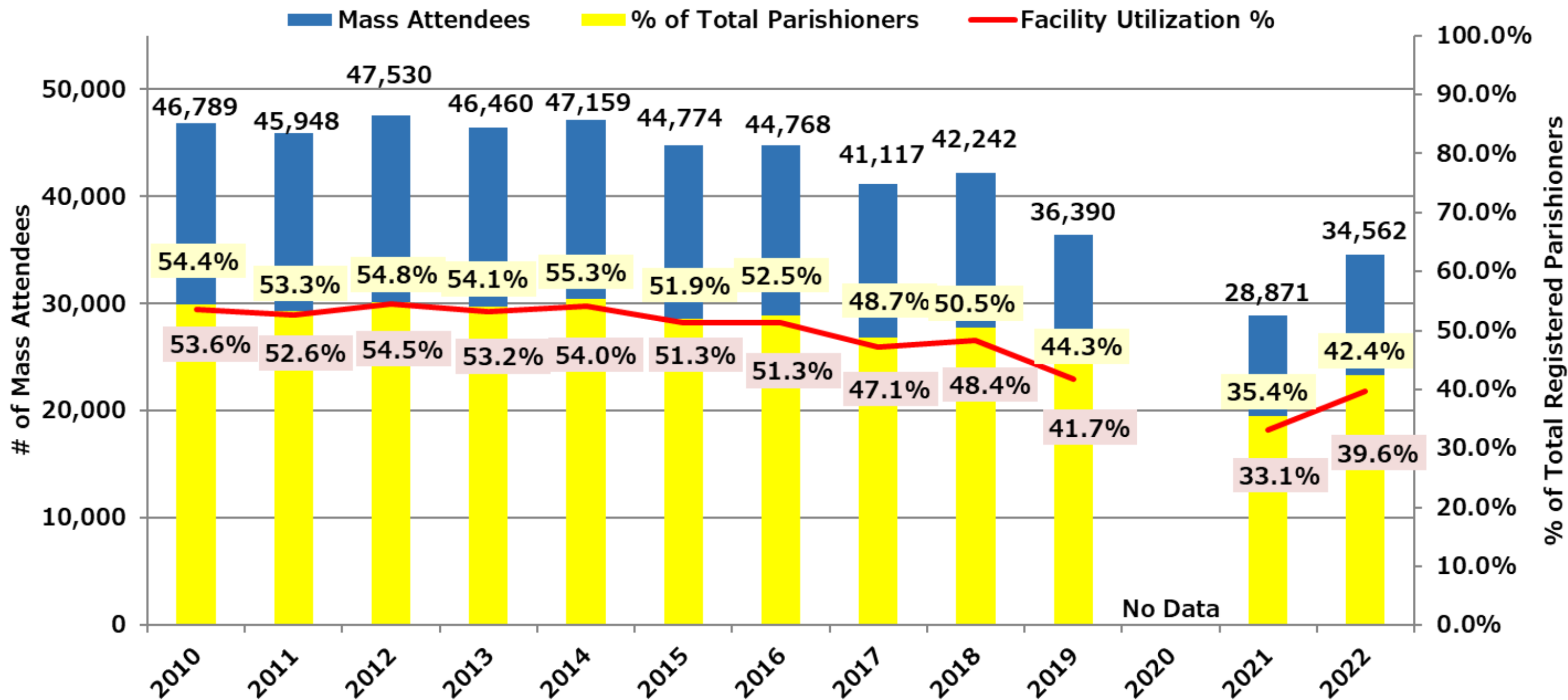
Historical & Current Mass Attendance

- Between 2010 & 2022
 - Total overall Mass attendance has declined by 26.1% from 46,789 to 34,562.
 - Mass attendance among total registered parishioners declined from 54.4% to 42.4%
 - Church Facility Utilization (attendees versus capacity) declined from 53.6% to 39.6%
- COVID: between 2019 & 2021
 - Mass attendance has declined 20.7% from 36,390 to 28,871
 - Mass attendance among total registered parishioners declined from 44.3% to 35.4%
 - Church Facility Utilization declined from 41.7% to 33.1%



Historical & Current Mass Attendance

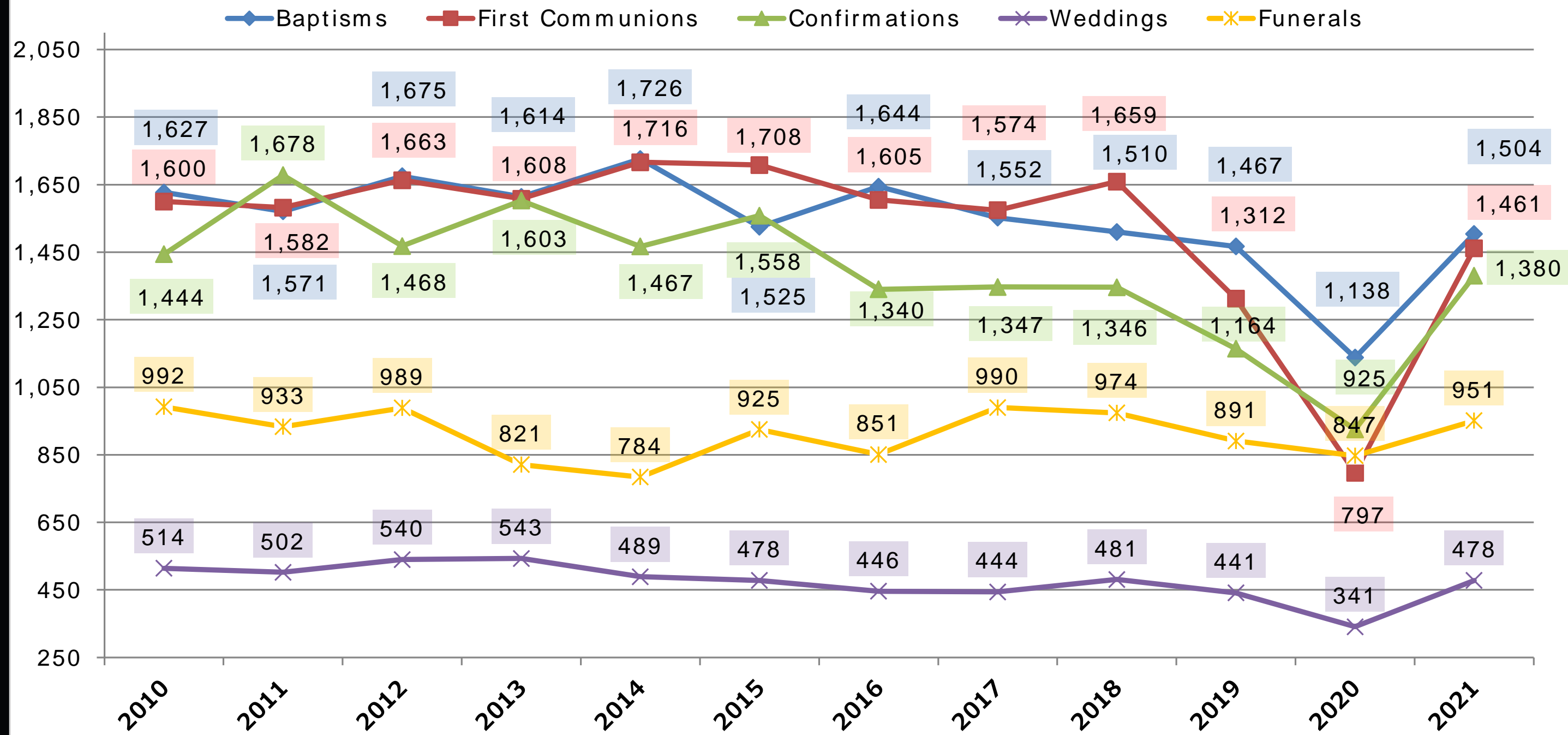
Diocese of Sioux Falls Historical Mass Attendance & Facility Utilization





Historical Sacraments

Diocese of Sioux Falls Historical Sacraments 2010-2021





Historical Sacraments

- Between 2010 & 2021 Sacraments declined 6.5% from 6,177 to 5,774
 - Baptisms declined 7.6% from 1,627 to 1,504
 - First Communion declined 8.7% from 1,600 to 1,461
 - Confirmations declined 4.4% from 1,444 to 1,380
 - Weddings declined 7.0% from 514 to 478
 - Funerals declined 4.1% from 992 to 951
- Between 2010 & 2019 Sacraments declined 14.6% from 6,177 to 5,275
- Between 2019 & 2021 Sacraments grew 9.5% from 5,275 to 5,774



Giving Analysis

58.4% of all registered households gave to the parish and/or diocese in 2021

- The average amount given was \$1,759 and the median income was \$69,469
- Combined, they contributed approximately 2.5% of their income to giving

17.1% of all registered households accounted for approximately 80% of all giving in 2021

- The average amount given was \$4,472 and the median income was \$73,124
- Combined, they contributed approximately 6.1% of their income to giving



Giving Analysis - 2021

DIocese OF SIOUX FALLS - GIVING ANALYSIS (BASED ON 2021 GIVING YEAR)

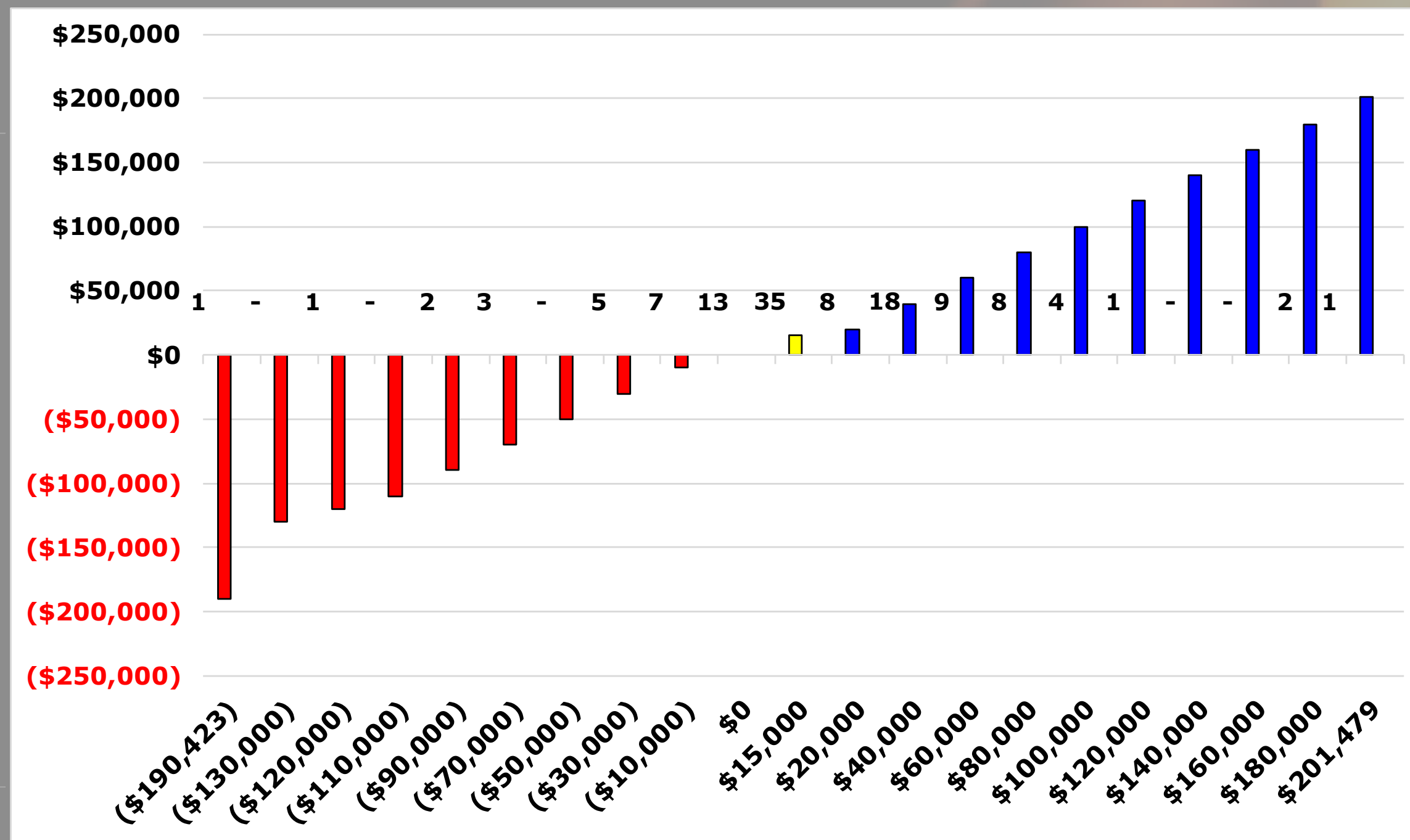
Median Household Income Range	Total Registered Households	All Givers					Givers who Accounted for ~80% of All Giving Dollars				
		Total Givers	% of Total Households	Avg. Median Income	Avg. Amount Given	% of Income	Total Givers	% of Total Households	Avg. Median Income	Avg. Amount Given	% of Income
< / = \$50,000	5,621	2,638	46.9%	\$40,439	\$1,435	3.5%	708	12.6%	\$40,944	\$4,053	9.9%
\$50,001 - \$75,000	18,644	10,323	55.4%	\$62,296	\$1,635	2.6%	3,108	16.7%	\$62,606	\$4,220	6.7%
\$75,001 - \$100,000	8,633	4,765	55.2%	\$84,645	\$1,895	2.2%	1,615	18.7%	\$85,410	\$4,597	5.4%
\$100,001 - \$150,000	3,031	1,747	57.6%	\$111,170	\$2,416	2.2%	672	22.2%	\$111,509	\$5,509	4.9%
> \$150,000	456	255	55.9%	\$155,442	\$3,068	2.0%	120	26.3%	\$155,134	\$5,973	3.9%
Totals	36,385	19,728	54.2%	\$69,469	\$1,759	2.5%	6,223	17.1%	\$73,124	\$4,472	6.1%



Parish Strength & Frailty

Parish Net Operating Surplus/Deficit after School Investment (2017-2021 Annual Average \$15,000)

Range	# of Parishes
(\$190,423)	1
(130,000)	-
(120,000)	1
(110,000)	-
(90,000)	2
(70,000)	3
(50,000)	-
(30,000)	5
(10,000)	7
0	13
15,000	35
20,000	8
40,000	18
60,000	9
80,000	8
100,000	4
120,000	1
140,000	-
160,000	-
180,000	2
201,479	1
	118



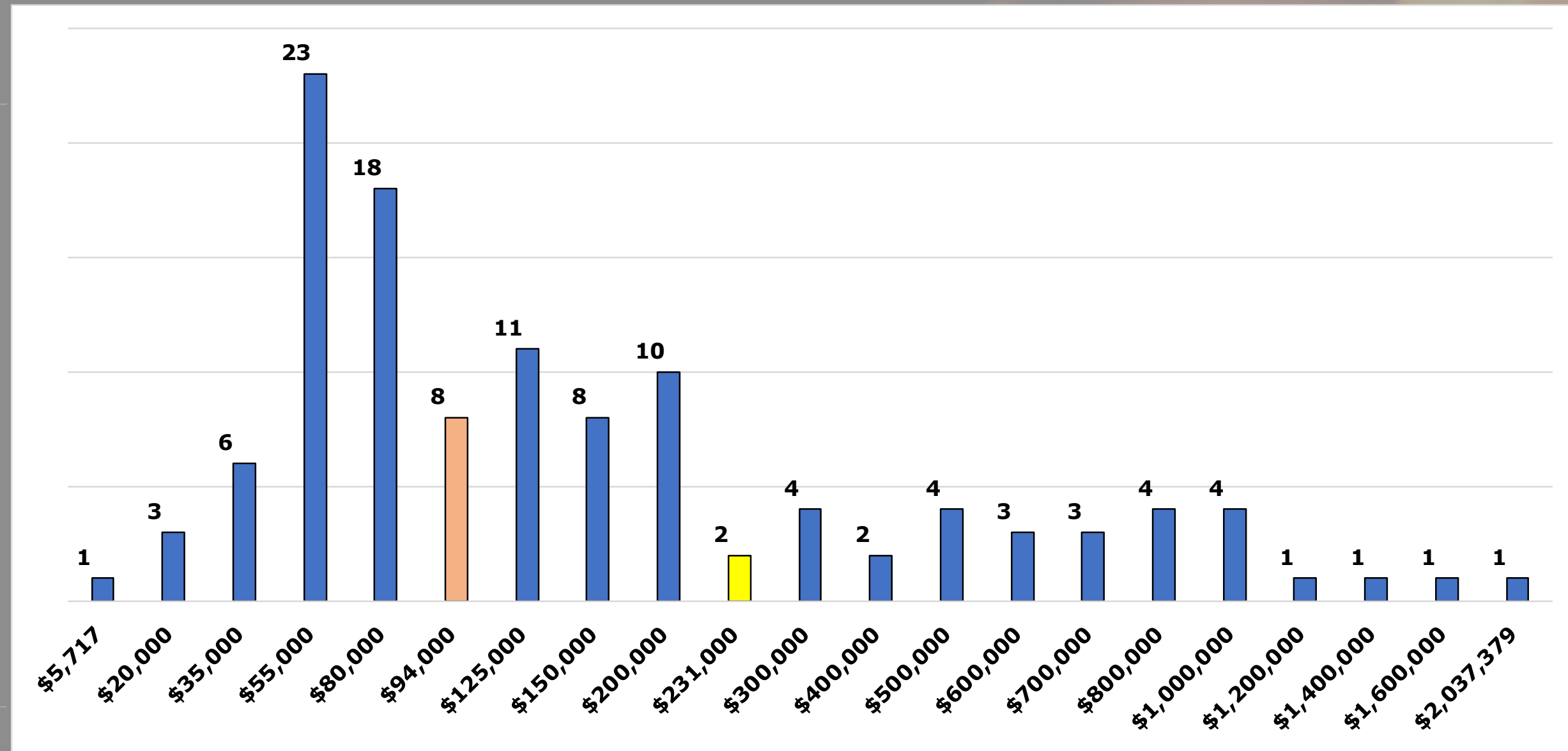
32 27.1% Parishes Operated with a Net Deficit
 86 72.9% Parishes Operated with a Net Surplus



Parish Strength & Frailty

Distribution of Envelope and Plate Collection Revenue (2017-2021 Annual Average \$231,000)

Range	# of Parishes
\$ 5,717	1
20,000	3
35,000	6
55,000	23
80,000	18
94,000	8
125,000	11
150,000	8
200,000	10
231,000	2
300,000	4
400,000	2
500,000	4
600,000	3
700,000	3
800,000	4
1,000,000	4
1,200,000	1
1,400,000	1
1,600,000	1
2,037,379	1
Total	118



Diocese Average	\$ 231,000	Median	\$ 94,000
Diocese - Excludes City of Sioux Falls Parishes	\$ 170,000		
City of Sioux Falls Parishes	\$ 975,000		



Parish Financial Insights and Questions

- Plate and envelope trend is flat and not reflective of increase in median income growth
- Are Boomers increasing their giving to sustain trend?
- Wide difference in parishes: region, size, financial scale, and assets (human resourcing and finances)
- General financial strength and good debt management across the diocese
- Percent investment in admin/ministries is trending down while investment in facilities is trending up
- Should this trend be disrupted?



Modeling and Feedback to Follow in October, 2022

